

Allelopathy Applications in Modern Agriculture

Adrija Bhandari, *Suchismita Tripathy and G. Prameela

College of Agriculture, OUAT, Bhubaneswar, Odisha, India

*Corresponding Author's email: suchiouat1@gmail.com

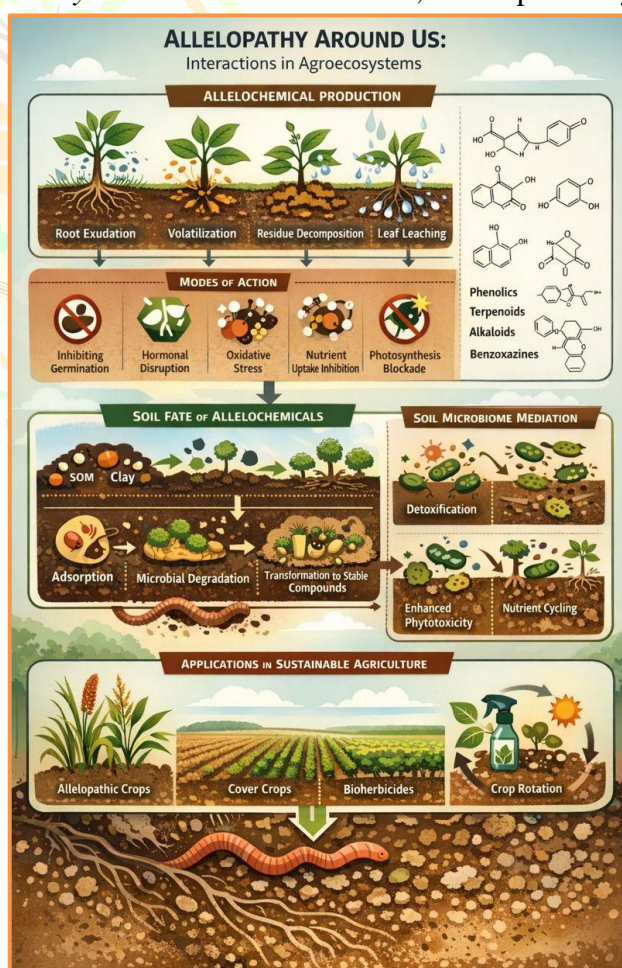
Allelopathy, the process by which plants influence neighbouring organisms through chemical release, is gaining renewed attention as a sustainable tool for weed suppression, soil health management, and ecological resilience. These allelochemicals may be released through roots, residues or decomposing plant parts. Recent research reveals intricate mechanisms underlying allelochemical biosynthesis, fate, and interaction with soil microbiomes, opening pathways for allelopathic crop use, bioherbicide development, and regenerative agriculture.

Key words: Allelopathy, allelochemical, crop rotation, cover cropping, microbiome engineering, regenerative agriculture

Introduction

Allelopathy was first defined in the early 20th century as a *biochemical interaction among plants and microorganisms mediated by secondary metabolites*. For decades, it was primarily studied through bioassays and simple extraction-based methods. Today, omics technologies, advanced metabolomics, and microbial ecology tools allow detailed exploration of allelochemical pathways, soil microbe interactions, and the ecological outcomes chemical dialogues. Allelopathy operates within an ecological continuum where plant chemistry, soil chemistry, microbial transformation, and environmental context determine outcomes. Increasingly, scientists view allelopathy not as a standalone phenomenon but as a complex intersection of phytochemistry and soil ecology that can be harnessed for sustainable agroecosystems.

Allelopathy operates within an ecological continuum where plant chemistry, soil chemistry, microbial transformation, and environmental context determine outcomes. Increasingly, scientists view allelopathy not as a standalone phenomenon but as a complex intersection of phytochemistry and soil ecology that can be harnessed for sustainable agroecosystems.



Biosynthesis of allelochemicals

Plants synthesize allelochemicals as part of broader secondary metabolic pathways, including phenolics, terpenoids, alkaloids, benzoxazinoids, and glucosinolates. These compounds may be stored in vacuoles or bound to cell walls and released through root exudation, leaf volatilization, leaching from residues, and decomposition of plant litter.

Key allelopathic crops used in agriculture

Sorghum, mustard, sunflower, rice, wheat, barley, and Brassica species are among the most widely studied allelopathic crops. When used in rotations or as residues, these crops reduce weed density by 20–60% while improving soil biological activity and nutrient cycling.

Applications of allelopathy in agriculture

1. Allelopathy as a tool for sustainable agriculture

- Allelopathy harnesses natural chemical interactions among plants to suppress weeds and pests.
- It complements chemical and mechanical methods, reducing over-reliance on herbicides.
- Rising herbicide resistance, production costs, and environmental concerns have accelerated its adoption in climate-smart farming systems.

2. Crop rotation and cropping system design

- Inclusion of allelopathic crops such as sorghum, mustard, sunflower, and rice disrupts weed life cycles.
- Well-designed rotations reduce weed density by 20–60% compared to continuous monocropping.
- These systems also enhance nutrient cycling, microbial diversity, and long-term productivity.

3. Integrated weed management and resistance control

- Allelopathic residues combined with reduced herbicide doses maintain yields while cutting chemical use by 25–50%.
- Multi-pathway action of allelochemicals slows the evolution of herbicide resistance.
- Particularly effective against glyphosate and ALS(Acetolactate synthase) resistant weeds.

4. Soil health and carbon sequestration benefits

- Root exudates and decomposing residues stimulate soil microbial activity.
- Microbial necromass contributes 40–60% of stable soil organic carbon stored as mineral-associated organic matter.
- Improved soil aggregation, nutrient retention, and resilience to drought and temperature extremes.

5. Allelopathy-based crop improvement

- Selective breeding and molecular markers identify crops with high allelochemical production and low autotoxicity.
- Rice, wheat, sorghum, and barley cultivars with enhanced allelopathic traits are now available.
- Post-2020 studies show certain rice varieties suppress barnyard grass without yield loss.

6. Precision and digital agriculture applications

- Precision placement of allelopathic residues creates localized weed suppressive zones.
- Site-specific residue management improves efficiency and reduces negative carryover effects.
- Integration with sensors and decision-support tools helps time applications for peak allelochemical activity.

7. Interaction with soil microbiome engineering

- Allelochemicals shape beneficial microbial communities in the rhizosphere.
- Certain microbes produce secondary metabolites that further inhibit weed germination.
- This synergy promotes microbial necromass formation and long-term soil carbon storage.

8. Role in regenerative and natural farming systems

- Plant-based bioherbicides derived from sorghum, rice straw, eucalyptus, and Brassica are gaining attention.
- Nano-formulations and controlled-release carriers improve field stability and persistence.
- Encapsulated extracts enhance weed suppression by 15–25% over crude formulations.

9. Climate-resilient cropping strategies

- Allelopathic crops often have stronger root systems and higher root-to-shoot ratios.
- Increased root-derived carbon improves soil structure and water retention.
- Particularly valuable in dryland and rainfed agriculture under climate stress.

10. Management of invasive and problem weeds

- Allelopathic compounds act on multiple biochemical pathways.
- Reduced risk of resistance development compared to single-site synthetic herbicides.
- Recommended as resistance-breaking components in modern weed management frameworks.

11. Designing low-input, biodiversity-based systems

- Allelopathy supports proactive ecological regulation rather than reactive chemical control.
- Encourages natural suppression of weeds and soil-borne pathogens.
- Aligns with global goals of reducing agrochemical footprints while sustaining productivity.

Future outlook

- Allelopathy has shifted from an incidental ecological effect to an intentionally designed management strategy.
- It now bridges weed science, soil carbon research, precision farming, and climate resilience.
- Positioned as a core ecological process shaping the future of sustainable agriculture.

In the coming decades, agriculture will not depend solely on external inputs to control weeds and sustain productivity. Instead, it will increasingly rely on the hidden chemical intelligence of plants themselves. Allelopathy offers a powerful reminder that plants have always possessed the tools to compete, survive, and regulate their environment. Modern agriculture is now learning to work with these natural processes rather than against them.

“Let us control weeds by plant intelligence, not by man intelligence”

References

1. Murthy, S., Jolly, G. E., & John, A. P. (2025). *Allelopathy in Weed Management: A Comprehensive Review*. International Journal of Plant & Soil Science.
2. Dmitrović et al. (2022). *Allelopathy and its application as a weed management tool: A review*. Frontiers in Plant Science.
3. Sorghum allelopathy research (2021/2022). *Unraveling Sorghum Allelopathy in Agriculture: Concepts and Implications*
4. H. Scavo & G. Mauromicale (2023). *Allelopathy as a source of bioherbicides: challenges and prospects for sustainable agriculture*.